

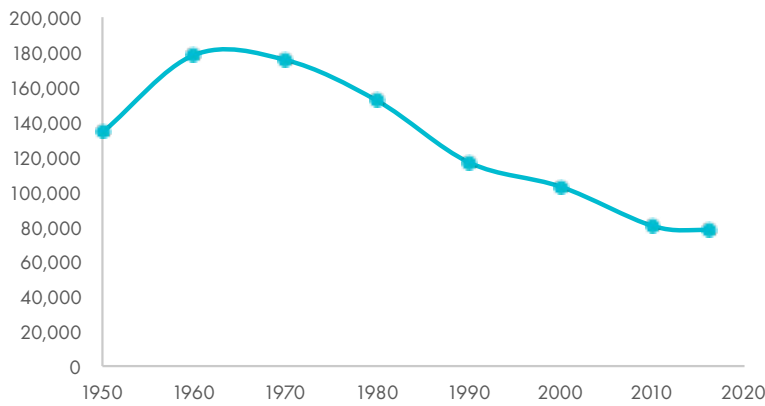
# WHERE ARE WE TODAY?

## DEMOGRAPHICS

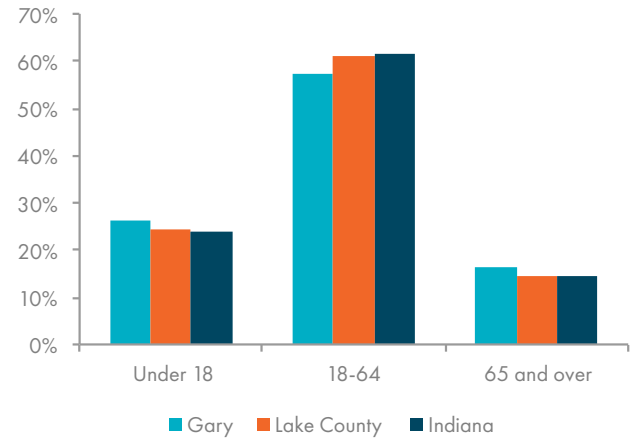
The population of Gary has been declining over the last 50 years, though the rate of decline is slowing. The City is diverse with over three quarters of residents identifying as Black, significantly higher than the county and state. In recent years, the City has seen a shift in age distribution, with working age residents leaving Gary.

**77,858** people live in Gary

POPULATION OVER TIME

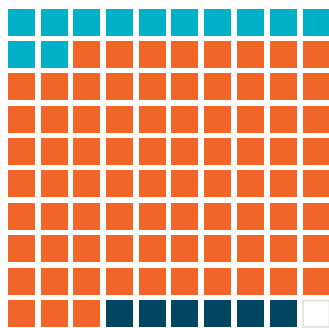


AGE OF POPULATION



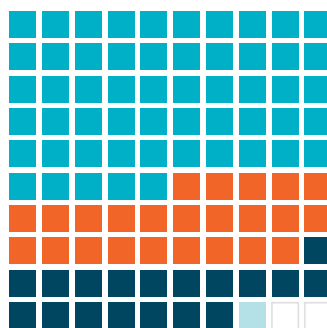
RACE / ETHNICITY

### Gary



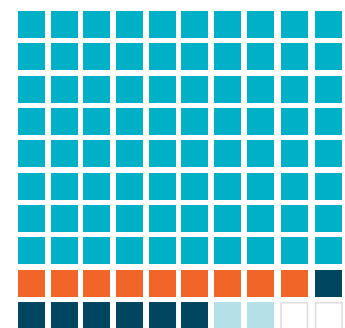
- White (12%)
- Black (81%)
- Hispanic/Latino (6%)
- Asian (<1%)
- Other/2 or More Races (1%)

### Lake County



- White (55%)
- Black (24%)
- Hispanic/Latino (18%)
- Asian (1%)
- Other/2 or More Races (2%)

### Indiana



- White (80%)
- Black (9%)
- Hispanic/Latino (7%)
- Asian (2%)
- Other/2 or More Races (2%)

Sources: Population, Age and Race - US Census American Community Survey (ACS) 2012-2016 5-year estimates; Population over time - US Census 2000 and 2010, US Census historical data available at [http://www.stats.indiana.edu/population/PopTotals/historic\\_counts\\_cities.asp](http://www.stats.indiana.edu/population/PopTotals/historic_counts_cities.asp)

## EDUCATION

Gary residents have lower education levels than surrounding areas and the state overall. As the population in the City has declined, so has school enrollment.

### ADULTS WITH A COLLEGE DEGREE



### K-12 SCHOOL ENROLLMENT



Sources: US Census American Community Survey (ACS) 2012-2016 5-year estimates, US Census 2000 and 2010; K-12 School Enrollment - Indiana Department of Education 2017-2018

## ECONOMY

Gary has a surplus of jobs, with more jobs than workers in the City. Gary features a large proportion of women and minority-owned small businesses. The top employment sectors generally reflect local and national trends, with health care employing the largest number of residents.

**29,656** jobs in Gary

### MEDIAN HOUSEHOLD INCOME



**1.2** jobs per employed resident

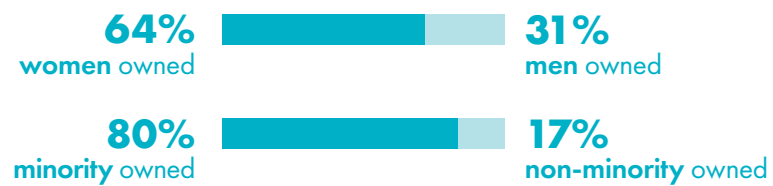


### TOP EMPLOYMENT SECTORS



### SMALL BUSINESSES

**6,467** small businesses in Gary

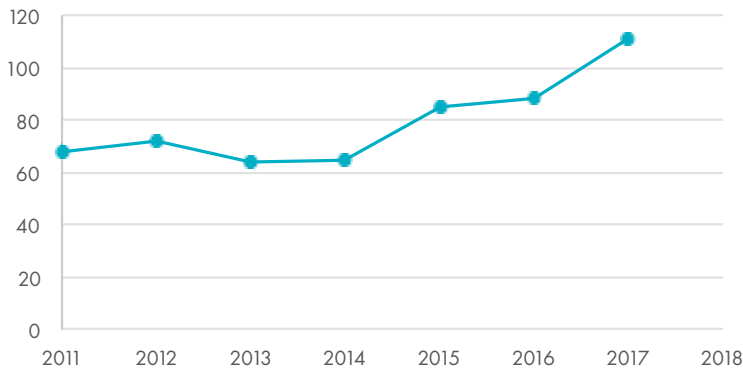


Sources: Median Household Income - US Census American Community Survey (ACS) 2012-2016 5-year estimates, US Census 2000 and 2010; Jobs and Top Employment Sectors - US Census LEHD 2005 and 2015; Small Businesses - US Census Survey of Business Owners and Self-Employed Persons (SBO) 2012

## HOUSING

Although approximately a third of housing units in Gary are vacant, the City has completed 500 demolitions since 2015. Things are looking up as home sales are increasing and tax delinquency rates have fallen over the last few years. Housing tenure is split with about half owner and half renter occupied units.

### HOME SALES



**42,458** total housing units

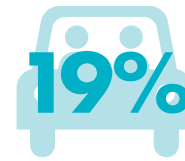
**31,205** occupied housing units  
**27%** vacancy rate

**456** demolitions since 2015

Sources: US Census American Community Survey (ACS) 2012-2016 5-year estimates, US Census 2000 and 2010, Home Sales and Demolitions - City of Gary

## MOBILITY

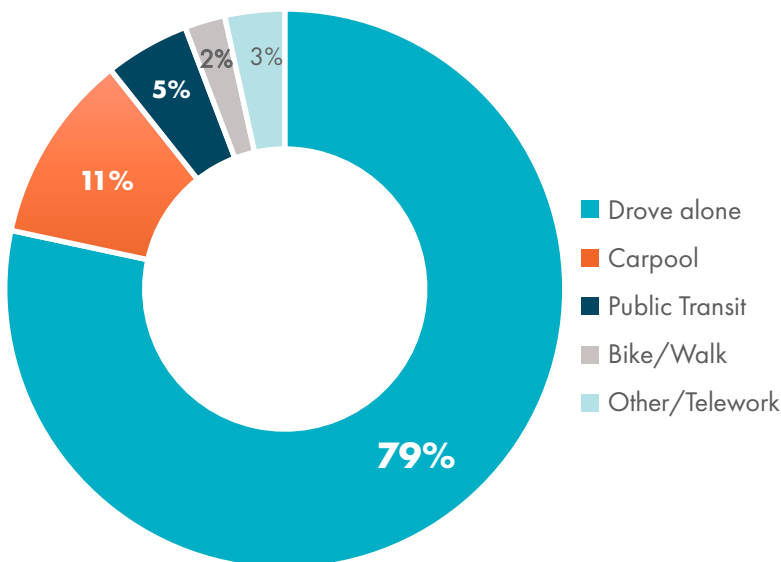
Most residents in the City drive alone or carpool to work. There is a net inflow of workers into the City, with more worker commuting to Gary than leaving. Almost a fifth of Gary households do not have access to a vehicle, which makes them particularly dependent on public transportation, which has been steadily increasing over time.



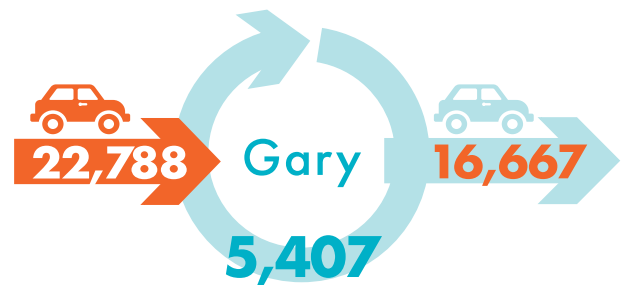
**19%**

of Gary households do not own a car, **DOUBLE** that of the county & state

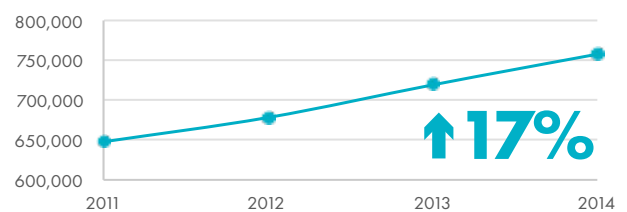
### HOW PEOPLE GET TO WORK



### WHERE WORKERS GO EACH DAY



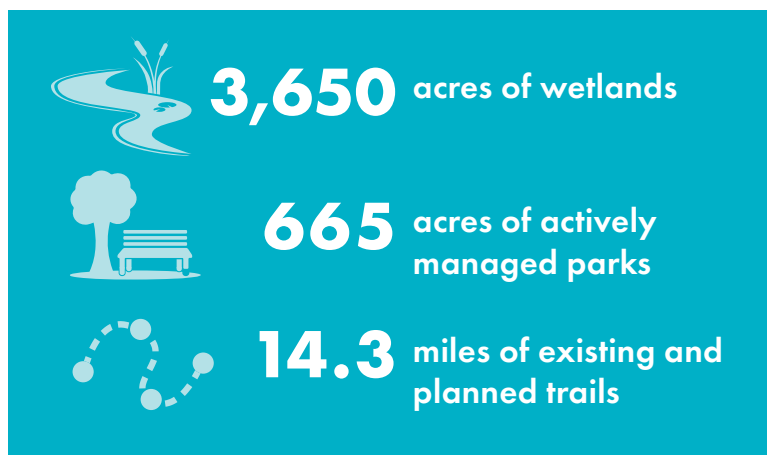
### GARY PUBLIC TRANSIT ANNUAL RIDERSHIP



Sources: Travel Mode and Vehicle Ownership - US Census American Community Survey (ACS) 2012-2016 5-year estimates; Worker Inflow/Outflow - US Census LEHD 2015 LODS data, GPTC Livable Broadway Plan; GPTC Ridership - National Transit Database

## ENVIRONMENT

Gary is rich in natural resource assets, with unique and biodiverse habitats, such as the dune and swale ecosystem. With its abundant wetlands, parks, trails, and miles of lakefront, the City has an opportunity to protect, expand, and connect these open spaces and recreation assets, including increasing public access to the Lake Michigan shoreline.



### MILES OF LAKEFRONT

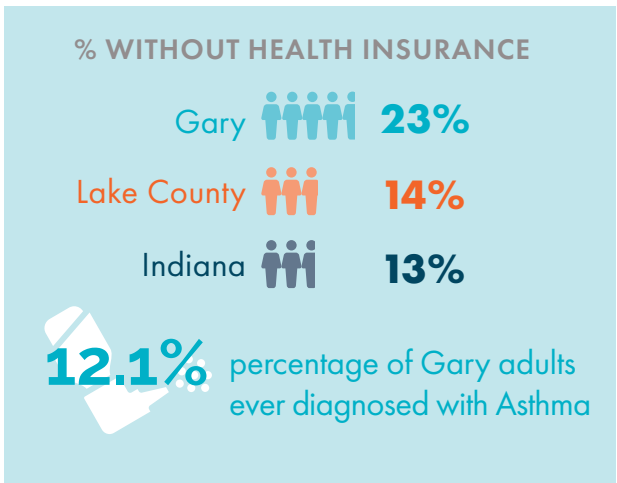
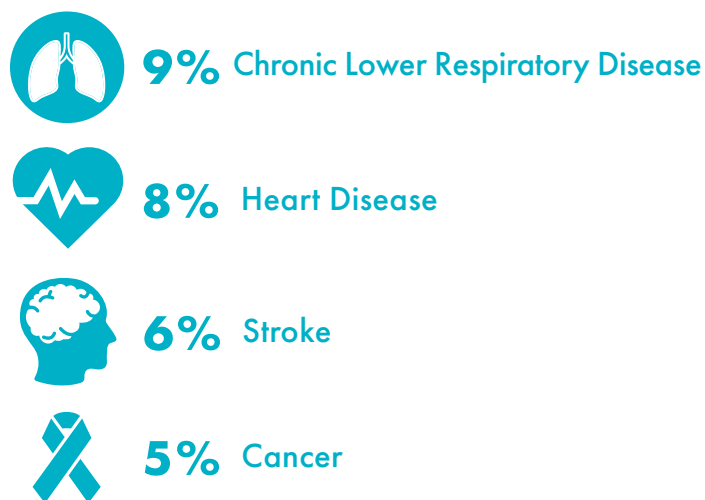


Sources: City of Gary; Acres of Wetland - US Fish & Wildlife; Park Acres - Parks Department and Assessor Files on Ownership (Green Infrastructure Project)

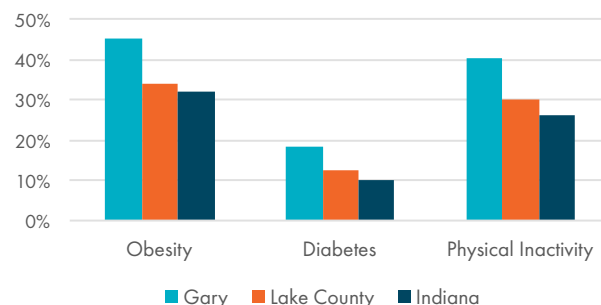
## HEALTH

The leading causes of death in Indiana are chronic lower respiratory disease, heart disease, stroke, and cancer. Gary ranks high in modifiable, lifestyle health risk factors such as obesity, diabetes, and physical inactivity, particularly compared to the county and state. Lake County and Gary also suffer from high rates of asthma.

### % GARY RESIDENTS EVER DIAGNOSED WITH THESE LEADING CAUSES OF DEATH



### LIFESTYLE HEALTH RISK FACTORS



Sources: US Census American Community Survey (ACS) 5-year estimates 2012-2016; Behavioral Risk Factor Surveillance System, CDC 2015, Indiana State Department of Health, Indiana Mortality Report, State and County Data 2016