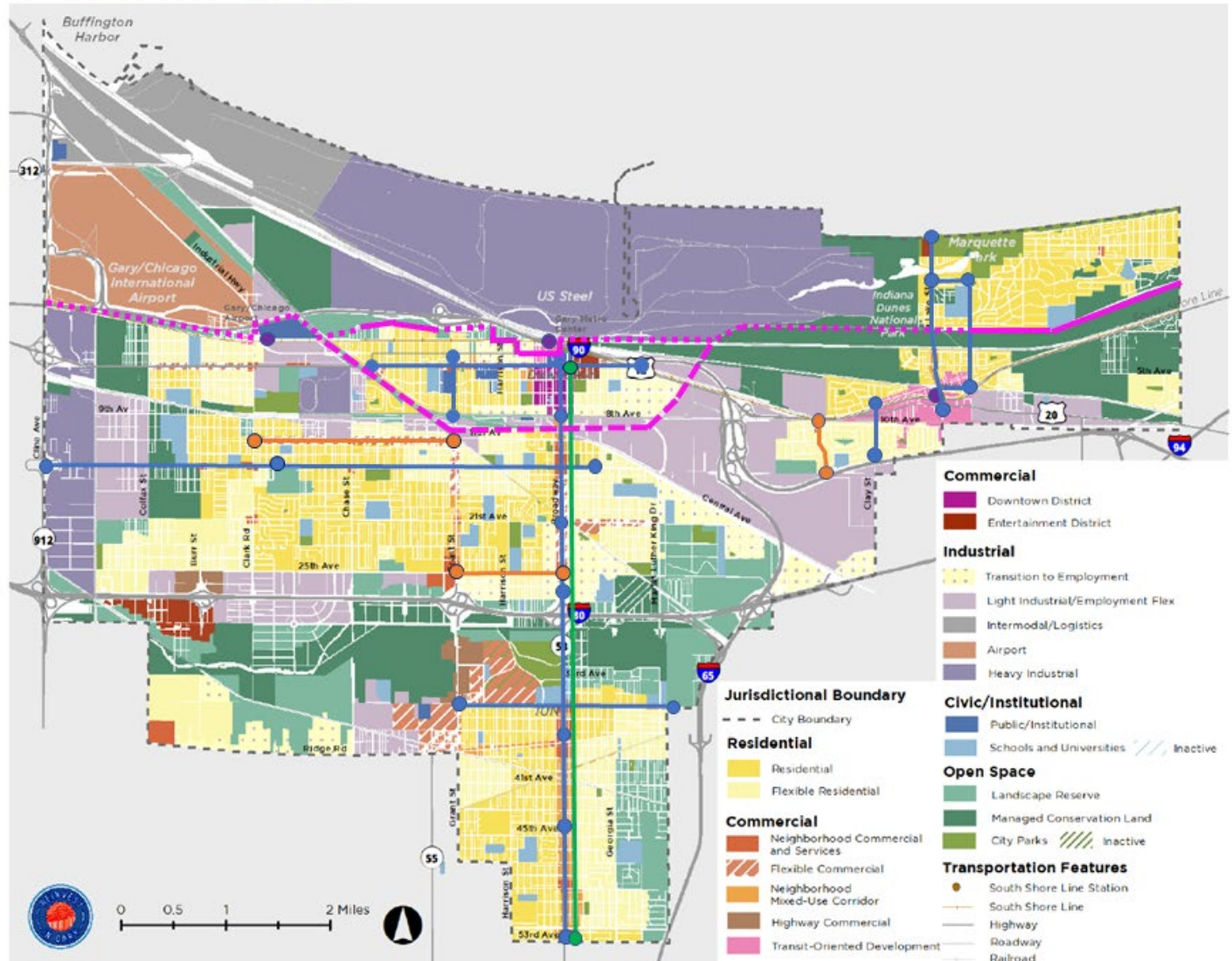


Currently Envisioned Transportation Projects Map

FIGURE 6-1. LAND USE PLAN

- Complete Streets
- Road Diet
- Potential Bike lanes
- Transit Oriented Development (TOD)
- Marquette Trail 
- Gary Elevated 



2019 Comprehensive Plan: Envisioned Transportation Projects (Table format)

The following tables, drawn from the City of Gary's 2019 Comprehensive Plan, provide additional details about many of the projects highlighted in the "Currently Envisioned Transportation Projects Map" on page 1.

The orange highlighted items in these tables reflect envisioned projects related to:

Complete Streets

Road Diets

Bike Lanes

Transit Orient Development

Gateway Beautification

2019 Comprehensive Plan: Envisioned Transportation Projects (Table format)

General Location	Termini	Type	Description	Status
W 4th Avenue and 5th Avenue	Bridge Street/ Buchan Street to split between Tennessee Street and Virginia Streets	Complete streets on 5th Avenue and 3-lane truck route on 4th Avenue	Two-way street (truck route) on 4th Avenue and two-way complete street (non-truck) on 5th Avenue Downtown to enhance pedestrian safety around City Hall, the ballpark, and other Downtown amenities.	Planned
Grant Street	W 8th Avenue to 4th Avenue	Complete street	Pedestrian-oriented improvements adjacent to Methodist Hospital	Conceptual
Buchanan Street	Toll Road entrance (I-90) to 8th Avenue	Green infrastructure project, gateway beautification	Greenway at the Buchanan Street entrance to the Toll Road	Planned
Massachusetts Street	W. 4th Avenue to 53rd Avenue	Bike lane	Dedicated north-south bike route	Conceptual
Broadway	4th Avenue to 53rd Avenue	Complete street	2018 Broadway resurfacing studies show excess right-of-way that would allow potential complete street elements to enhance walkability and pedestrian safety	Programmed
Lake Street/ Miller Station (SSL)	1/2 mile around station	Transit-Oriented Development (TOD)	Pedestrian and multi-modal improvements adjacent to station	Programmed
Gary Metro/ Adam Benjamin Station (SSL)	1/2 mile around station	Transit-Oriented Development (TOD)	Pedestrian and multi-modal improvements adjacent to station	Conceptual

2019 Comprehensive Plan: Envisioned Transportation Projects (Table format)

General Location	Termini	Type	Description	Status
Clark Road/ Gary-Chicago Airport Station (SSL)	1/2 mile around station	Transit-Oriented Development (TOD)	Pedestrian and multi-modal improvements adjacent to station	Conceptual
Aetna Street	Dunes Highway to 15th Avenue	Road diet	Reduce travel lanes to enhance pedestrian safety and lessen burden on infrastructure	Conceptual
Clay Street	15th Avenue to 6th Avenue	Complete streets	Better, safer connectivity from Aetna and Glen Ryan to Miller TOD	Conceptual
Lake Street	US 20 to Lake Street Beach (860 N. Lake Street)	Complete streets and stormwater improvements	Better, safer connectivity from US 20 to Lake Michigan amenities	Programmed
Miller Avenue	Lake Street to Grand Blvd, including intersection	Complete streets and intersection improvements	Connection in a continuous loop of complete street elements connecting Marquette Park, Lake Street, and the Miller TOD	Conceptual
Grand Blvd	Miller Avenue intersection to Hemlock Avenue	Complete streets	Connection in a continuous loop of complete street elements connecting Marquette Park, Lake Street, and the Miller TOD	Conceptual
Hemlock Avenue	Grand Blvd to Lake Street	Complete streets	Connection in a continuous loop of complete street elements connecting Marquette Park, Lake Street, and the Miller TOD	Conceptual

2019 Comprehensive Plan: Envisioned Transportation Projects (Table format)

General Location	Termini	Type	Description	Status
US 12/20 Realignment	US 12 vacated east of Clay Street, US 20 reconnecting to US 12 via new road west of Lake Street	Road realignment	Vacation of parallel highway accommodates SSL improvements and associated development	Programmed
11th Avenue	Clark Street to Grant Street	Road diet	Reduce travel lanes to enhance pedestrian safety and lessen burden on infrastructure	Conceptual
15th Avenue	Virginia Street to Cline Avenue	Complete streets	Improvements to better, more safely connect 15th Avenue corridor to amenities to the west, including Purdue NW	Conceptual
25th Avenue	Broadway to Grant Street	Road diet	Reduce travel lanes to enhance pedestrian safety and lessen burden on infrastructure	Conceptual
35th Avenue	Grant Street to Mississippi Street	Complete streets	Improve safety and connectivity within University Park	Planned
Ridge Road	Broadway to Mississippi Street	Rehabilitation	Complete connection along regional arterial	Planned
Harrison Street	80/94 Overpass	Rehabilitation	Restore north-south connectivity across I-80/94	Conceptual
Buffington Harbor Road	Buffington Harbor Bridge termini to Buchanan Street	New Construction	Continued development of industrial grade road serving Buffington Harbor industrial area	Planned

2019 Comprehensive Plan: Envisioned Transportation Projects (Table format)

General Location	Termini	Type	Description	Status
Lake Street RR Crossing	Lake Street and CSX RR Tracks	Safety Improvements	Conduct feasibility study for safety and mobility improvements; implement recommendations	Conceptual
Old Hobart Rd RR Crossing	Old Hobart Road and CSX RR Tracks	Safety Improvements	Conduct feasibility study for safety improvements; implement recommendations	Conceptual
County Line Road RR Crossing	County Line Road and NS RR Tracks	Safety Improvements	Conduct feasibility study for safety and mobility improvements; implement recommendations	Conceptual
Grant Street and Ridge Road RR Crossing	Grant Street and Ridge Road @ NS Tracks	Safety Improvements	Conduct feasibility study for safety and mobility improvements; implement recommendations	Conceptual
Marquette Trail	Grand Blvd to Ambridge Mann Park and Bridge Street to Cline Ave	Multiuse trail	Continue design and construction of trail segments: Grand Blvd to Broadway (Union Station) Union Station to Ambridge Mann Park Bridge Street to Clark Rd Clark Rd to Cline Avenue	Planned/ Programmed

2019 Comprehensive Plan: Envisioned Transportation Projects (Table format)

General Location	Termini	Type	Description	Status
Green Link Trail	Burr Street to EJE RR	Multiuse trail	Continue design and construction of trail segments: County Line Road to CSX RR Burr Street to Colfax Street Colfax Street to CN RR	Planned
Gary Elevate	5th and Chase Street to Green Link Trail along/ south of Mason Street	Multiuse trail	Redevelop the abandoned, elevated train line through the Midtown neighborhood of Gary. The trail will connect key neighborhoods and residents to other proposed trail extensions including the Marquette Trail and Gary Greenlink Trail.	Planned

